

## SYNOPSIS

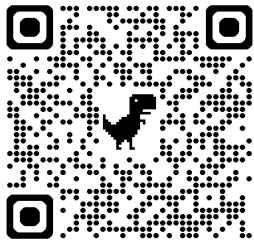
Five college students go to an abandoned cabin in the woods and accidentally unleash an evil force that turns them all into demons. It's all up to Ash (a housewares employee, turned demon-killing hero) and his trusty chainsaw to save the day. Blood flies. Limbs are dismembered. Demons tell bad jokes... and all to music!

**WARNING: AN IMMATURE SHOW FOR A MATURE AUDIENCE.  
(CONTAINS BLOOD, ADULT LANGUAGE, SEXUAL THEMES,  
VIOLENCE, AND IS ALL AROUND PRETTY GROSS.)**

Please be advised that this performance includes flashing lights, smoke effects, and loud noises, which may not be suitable for all audiences

**View Full  
Digital Program  
by scanning QR CODE**

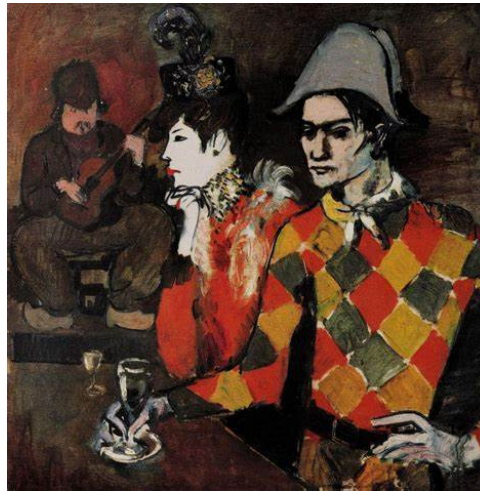
See full production team, cast and crew bios, thank-yous, and more



**tcsaugus.org**

**2025  
SEASON**

### SPRING PICASSO AT THE LAPIN AGILE By Steve Martin



### FALL RIDE THE CYCLONE



**THEATRE  
COMPANY OF  
SAUGUS**



Book and Lyrics by George Reinblatt  
Additional Lyrics by Christopher Bond

Music by  
Frank Cipolla Christopher Bond  
Melissa Morris George Reinblatt  
Additional Music by  
Rob Doleman

Based on characters created by Sam Raimi  
By special arrangement with  
Renaissance Pictures, Ltd. & Studiocanal

Original Music Supervision by  
Frank Cipolla  
Originally Produced in New York by  
Jenkay LLC, Jeffrey Latimer Entertainment,  
Just For Laughs live, and Idle Dave Productions LLC

Art by Crystal Araiza

## DIRECTOR'S NOTE

Director's notes are often used as an outlet for directors to wax philosophically, so I will spare you the profundity - mostly. Live theatre serves a variety of roles in society, but sometimes it serves the most basic purpose by bringing the community together to have a good time and escape day-to-day monotony.

Comedies tend to be more high-brow in the theatre. Wordplay amidst absurd situations has built laughs since Wilde to Simon to the contemporary musical theatre. *Evil Dead: The Musical* takes a different approach. Through embracing Sam Raimi's original trilogy's camp and silliness, I have ventured into gross-out collegiate comedy taking the tiniest moment of absurdity and pushing it into the stratosphere at every chance. This comedy relies on sight gags, puns, melodrama, and crude humor.

At first glance, this seemingly 'easy' show is extremely intricate. Finding the appropriate humor, adding additional humor and situations, leveling up an already absurd story, staying respectful of the films and cult following, carefully and meticulously curating fight sequences and using blood appropriately, building vessels for blood delivery, and ensuring all is done safely. This has been the ride of a lifetime that has provided joy in unexpected and ridiculous ways.

As a result of the hard work the cast and production team have put into this production, I am extremely grateful and proud. With that in mind, I invite you to enjoy the experience we all are here for. Laugh out loud, I promise - it will feel good! Please enjoy this wild, campy, bloody ride that is *Evil Dead: The Musical*.

-Jason Hair-Wynn

## Cast



Brady Neiss-Moe  
Ash



Dana Murray  
Linda



Valerie Whiteneck  
Cheryl



Ian Page  
Scotty



Mariah (Mulcahy) Hanzel  
Shelly



Caroline DeBrot  
Annie



Mark Damon  
Jake



Andy LeBlanc  
Ed



Lauren Thompson  
Fake Shemp



Brian Dion  
Knowby



Meg Brown  
Ensemble



Chelsea Callahan  
Ensemble



Shawyoun Shaidani  
Ensemble



Michael Silvia  
Ensemble



Melissa Sullivan  
Ensemble



Linda's Head

**Director - Jason Hair-Wynn**  
**Music Director - Shane Stecher**  
**Stage Manager - Ally Lewis**

**Shane Stecher - Piano**  
**Michael Berkowitz - Guitar**  
**Joe Cincotta - Drums**  
**Steve Araiza - Bass**